

CARPORT (for one car)

ALSO AVAILABLE FOR 2/4/6/8 CARS



Number of PV panels: 12

Power output: 3kW

Dimensions: 6.2m x 3.3m

Height: 2.9m/2.0m

Width: 3.0 m

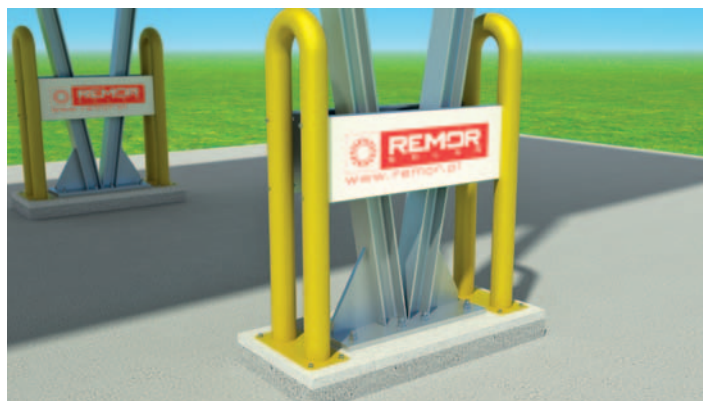
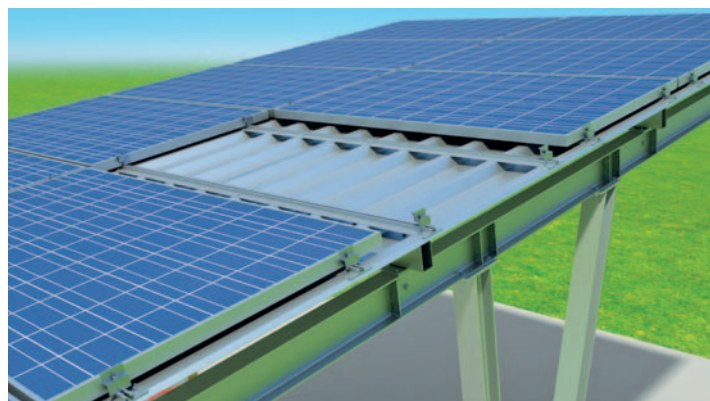
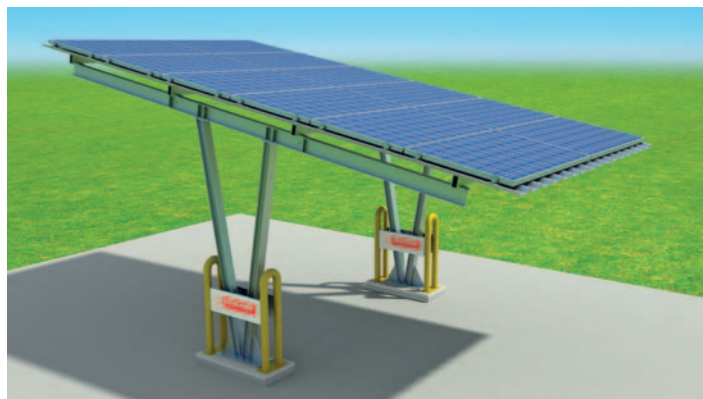
Concrete foundation

Structural materials

Structure: powder coated steel

Roof: zinc coated, painted steel

Mounting system: Aluminium



Solar roof warehouse



Power output: 50kW

Roof area: 350m²

Dimensions: 13.6m x 25.8m

Height: 5.1m/2.2m

Structural material: hot deep galvanized steel

Roof: zinc coated painted steel

Option: side walls

