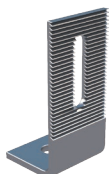


high quality stainless steel and aluminum

for all roofs types

wood screws and hexagon nuts are included



41

### Bracket

#### Art. 0122 Bracket

Measurements	Hole	Long Hole	Use	Material
	M10	M8	Art. 0121	A2 1.4301 stainless steel



42

### Mounting plate

#### Art. 045 Mounting plate

Available Measurements	Hole	Long Hole	Use	Material
<ul style="list-style-type: none"> <li>80x40x5 (mm)</li> <li>110x40x5 (mm)</li> </ul>	M10	M8	Art. 0121	A2 1.4301 stainless steel

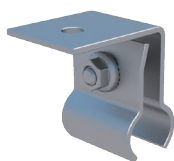


43

### Seam Roof Clamp

#### Art. 120 Seam Roof Clamp

Measurements	Hole	Long Hole	Use	Material
100x40x40x4 (mm)	∅9 (mm) x 2 M8	11 (mm) M10	Seam Roof Clamps	A2 1.4301 stainless steel

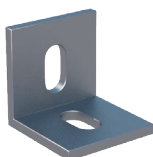


44

### Kalzip Bracket

#### Art. 086 Kalzip Bracket

Available Measurements	Use	Material
<ul style="list-style-type: none"> <li>M8</li> </ul>	Use with Hexagon socket cap screws Art. 0132 Use: for Mounting Rails Art. 0109, Art. 0110, Art. 062, Art. 0111, Art. 0112	A2 1.4301 stainless steel



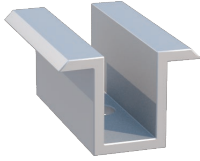
45

### Mounting Bracket

#### Art. 047 Mounting Bracket

Measurements	Long Hole	Use	Material
40x40x4 (mm)	10 (mm) M9	Cross assembly	AL 6060T6

46



### Middle clamp

#### Art. 073 Middle clamp

Available Measurements	Hole	Use	Material
<ul style="list-style-type: none"> <li>50x30x3 (mm)</li> <li>70x30x3 (mm)</li> <li>80x30x3 (mm)</li> </ul>	M 8	for mounting PV modules with frame	AL 6060T6

47

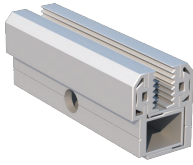


### End clamp

#### Art. 075 End clamp

Available length	Available heights	Hole	Use	Material
<ul style="list-style-type: none"> <li>50 (mm)</li> <li>70 (mm)</li> <li>80 (mm)</li> </ul>	<ul style="list-style-type: none"> <li>35 (mm)</li> <li>40 (mm)</li> <li>45 (mm)</li> <li>46 (mm)</li> <li>48 (mm)</li> <li>50 (mm)</li> </ul>	M 8	for mounting PV modules with frame	AL 6060T6

48

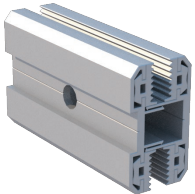


### End clamp for laminates

#### Art. 077 End clamp for laminates

Measurements	Use	Material
80x30x25 (mm)	thin-film modules	AL 6060T612

49

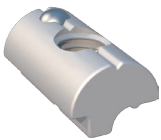


### Middle clamp for laminates

#### Art. 076 Middle clamp for laminates

Measurements	Use	Material
80x30x25 (mm)	thin-film modules	AL 6060T6

50



### T-slot nut self aligning with spring ball

#### Art. 080 T-slot nut self aligning with spring ball

Available Measurements	Use	Material
<ul style="list-style-type: none"> <li>M 8</li> </ul>	Use with Hexagon socket cap screws Art. 0132 Use: for Mounting Rails Art. 0109, Art. 0110, Art. 062, Art. 0111, Art. 0112	A2 1.4301 stainless steel

51



### T-slot click

#### Art. 0147 T-slot click

Measurements	Use	Material
M 8	thin-film modules	AL 6060T6