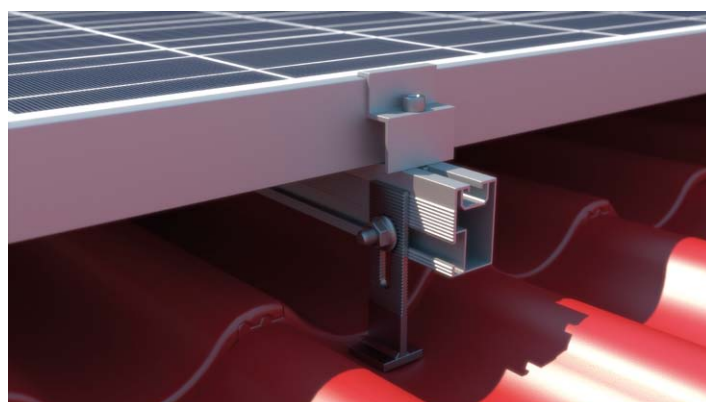
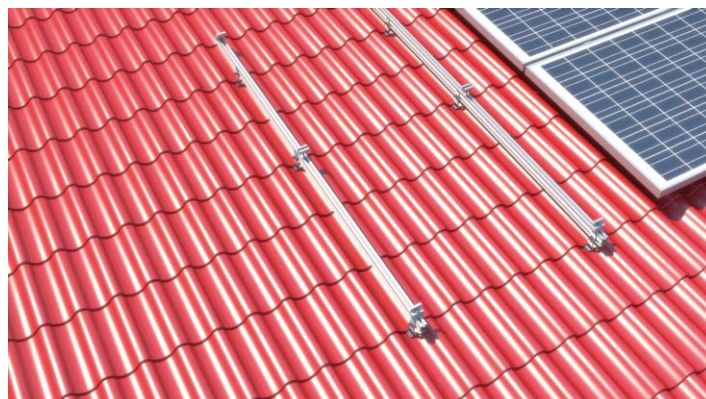


SYSTEM REM-06 HORIZONTAL

PANTILE ROOF II



Art. 0109
Mounting Rail
 Measurements: 31x50
 Length: 6200mm, 3100mm, 2070mm
 Joining screws top: M8
 side: M8/M10/M12
 Material: AL 6060T6



Art. 0114
Pantile Roof Hook vertical
 Plate: 180x50x4, (12x)Hole: Ø7mm
 Bar: 30x5,
 Long Hole: 9x37,5
 Use: pantile roof, horizontal mounting of PV modules
 Material: A2 1.4301 stainless steel, shot blasting



Art. 0129
Hammerhead screws 28/15
 Measurements:
 M8 16÷70
 M10 16÷100
 Use: Mounting Rail Art. 0110
 Material: A2 1.4301 stainless steel



Art. 0134
Hexagon flange nuts with serration DIN 6923
 M6
 M8
 M10
 M12
 Material: 1.4301 A2



Art. 0132
Hexagon socket cap screws DIN 912 with serration
 M8 12÷60
 Material: A2 1.4301 stainless steel



Art. 080
T-slot nuts, self aligning with spring ball M8
 Used with hexagon socket cap screw Art. 0132
 Use: for Mounting Rails Art. 0109, Art. 0110, Art. 062, Art. 0111, Art. 0112
 Material: AL 6060T6



Art. 0147
Click
 M8
 Material: Aluminium
 for rails: Art. 0109, Art. 0111



Art. 073
Middle Clamp
 Length: 50mm (standard)
 Length: 60mm – 100mm
 Height: 30mm
 Thickness: 3mm
 Colors: plain aluminium/black
 Material: AL 6060T6



Art. 075
End clamp
 Length: 50 (standard)
 Length: 70mm
 Height: from 30mm to 50mm
 Thickness: 3mm
 Colors: plain aluminium/black
 Material: AL 6060T6



Art. 0127
Screw TCS with serration
 M6 60÷160
 M8 60÷400
 Use: Roof Hook
 Material: A2 1.4301 stainless steel