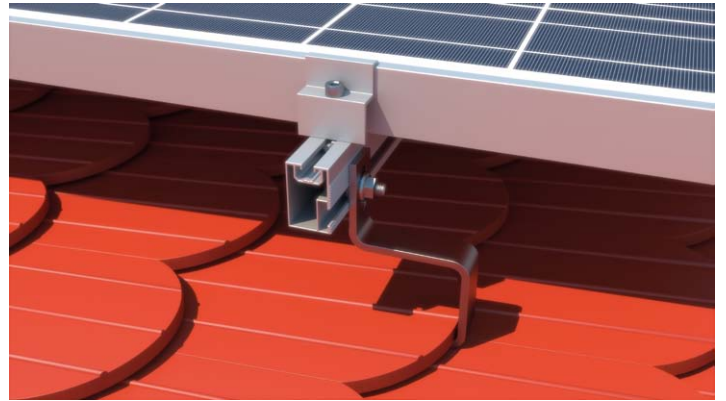
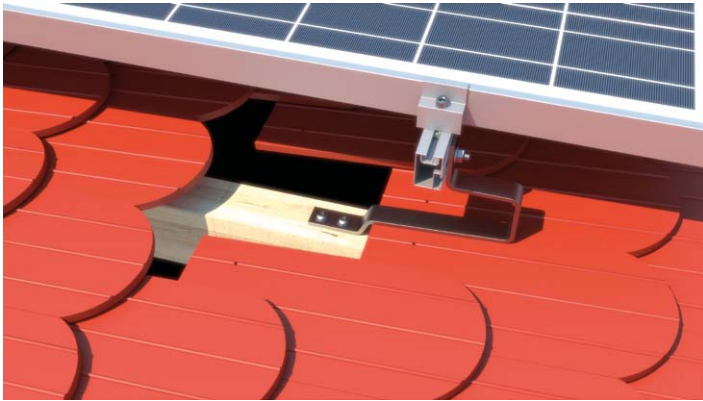


SYSTEM REM-08 VERTICAL

PLAIN TILE ROOF



Art. 0109

Mounting Rail
Measurements: 31x50
Length: 6200mm, 3100mm, 2070mm
Joining screws top: M8
side: M8/M10/M12
Material: AL 6060T6

Art. 0143

Plain Tile Roof Hook
Plate 30x6, length: 265mm, long hole: 9x24mm
high: 183mm (42mm + 78mm + 63mm)
thickness: 6mm
use: Plain Tile
Material: A2 Stainless steel

Art. 0129

Hammerhead screws 28/15
Measurements:
M8 16÷70
M10 16÷100
Use: Mounting Rail Art. 0110
Material: A2 1.4301 stainless steel

Art. 0134

Hexagon flange nuts with serration DIN 6923
M6
M8
M10
M12
Material: 1.4301 A2

Art. 0132

Hexagon socket cap screws DIN 912 with serration
M8 12÷60
Material: A2 1.4301 stainless steel

Art. 080

T-slot nuts, self aligning with spring ball M8
Used with hexagon socket cap screw Art. 0132
Use: for Mounting Rails Art. 0109, Art. 0110, Art. 062, Art. 0111, Art. 0112
Material: AL 6060T6



Art. 0147

Click
M8
Material: Aluminium
for rails: Art. 0109, Art. 0111

Art. 073

Middle Clamp
Length: 50mm (standard)
Length: 60mm – 100mm
Height: 30mm
Thickness: 3mm
Colors: plain aluminium/black
Material: AL 6060T6

Art. 075

End clamp
Length: 50 (standard)
Length: 70mm
Height: from 30mm to 50mm
Thickness: 3mm
Colors: plain aluminium/black
Material: AL 6060T6

Art. 0127

Screw TCS with serration
M6 60÷160
M8 60÷400
Use: Roof Hook
Material: A2 1.4301 stainless steel